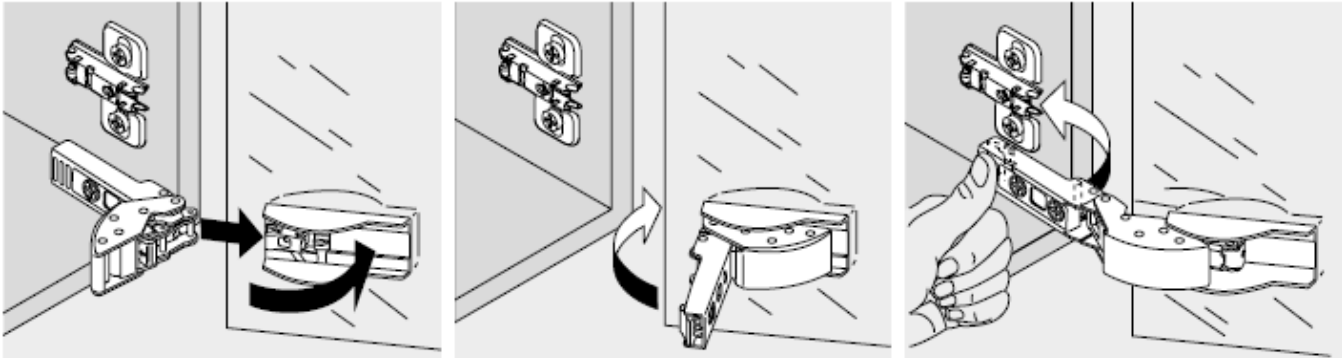


## Hinge Assembly

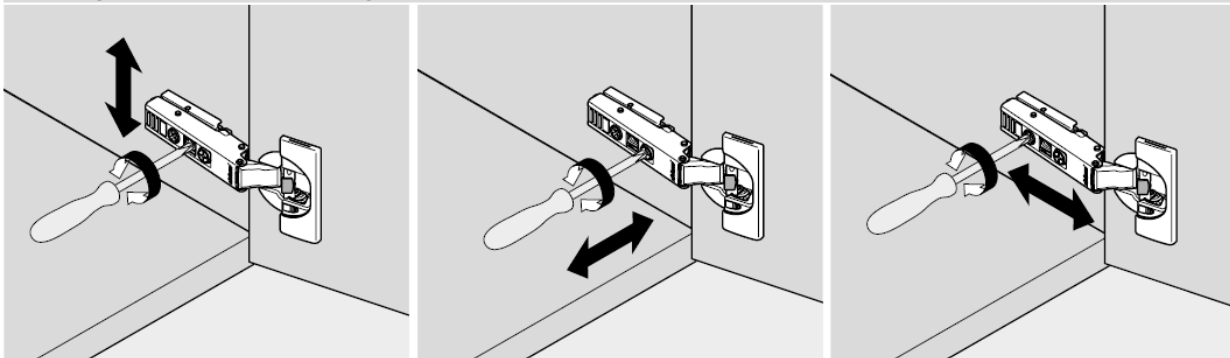
### Assembly



To assemble the hinge(s) to the door and cabinet, you must first ensure all hinges are in the closed position creating an "L" shape. Second, attach each hinge to the hinge bases on the mirror door. Once done, open all hinges and carefully pick up the door. While holding the door, you will line up the hinges with the hinge plate inside the cabinet and connect them. If done properly, you will hear a "click" sound. Ensure this is done for all hinges in the cabinet.

## Hinge Adjustment

### CLIP top BLUMOTION/CLIP top



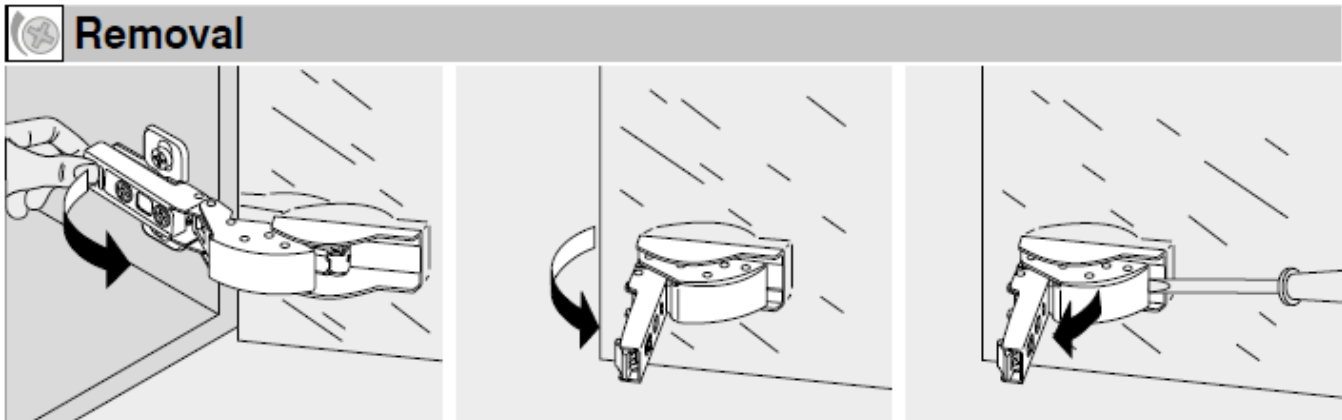
Height adjustment

Side adjustment

Depth adjustment

It is strongly advised to only make ¼ turn adjustment increments, and to apply the same adjustments to each hinge before making another turn. Failure to do so may cause uneven tension in the hinges which could result in the cabinet and/or door to warp and further be damaged if enough tension is applied.

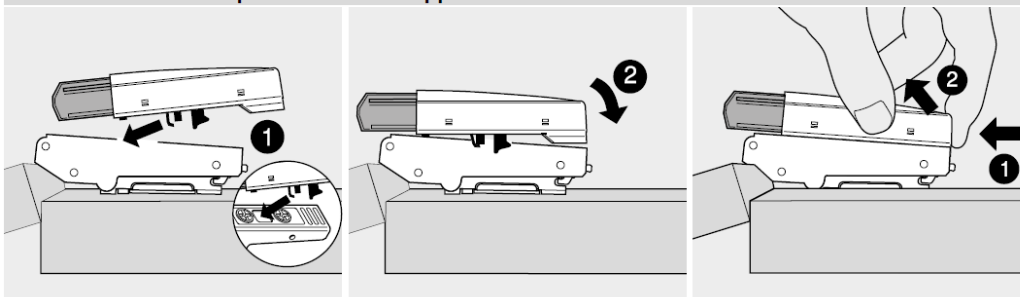
## Hinge Removal



To remove hinge(s), you will need to open the mirror door and ensure you have a good grip on it as you will be supporting the door once the hinges are released. Once you're securely holding the door, pull the tab at the back of the hinge located inside the cabinet. Once pulled, that hinge will immediately release from the hinge plate inside the cabinet. The hinges will remain attached to the mirror door. Do this action for all hinges in the cabinet, and carefully place the mirror down on a clean and sturdy surface. Once done, using a flat head screw driver in one hand and holding the hinge in your other, you'll lift the clip that attaches the hinge to the hinge plate on the mirror door. This will release the hinge from the hinge plate on the mirror door.

## Soft Close Assembly and Removal

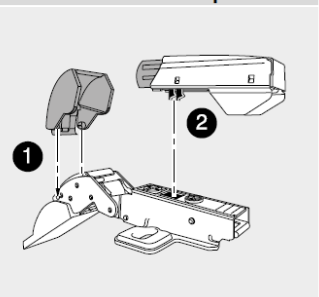
BLUMOTION 973A – clip on for standard applications



Assembly

Removal

BLUMOTION 973A – clip on



CRISTALLO hinge

If you have any questions regarding these instructions, please contact us per the details below.